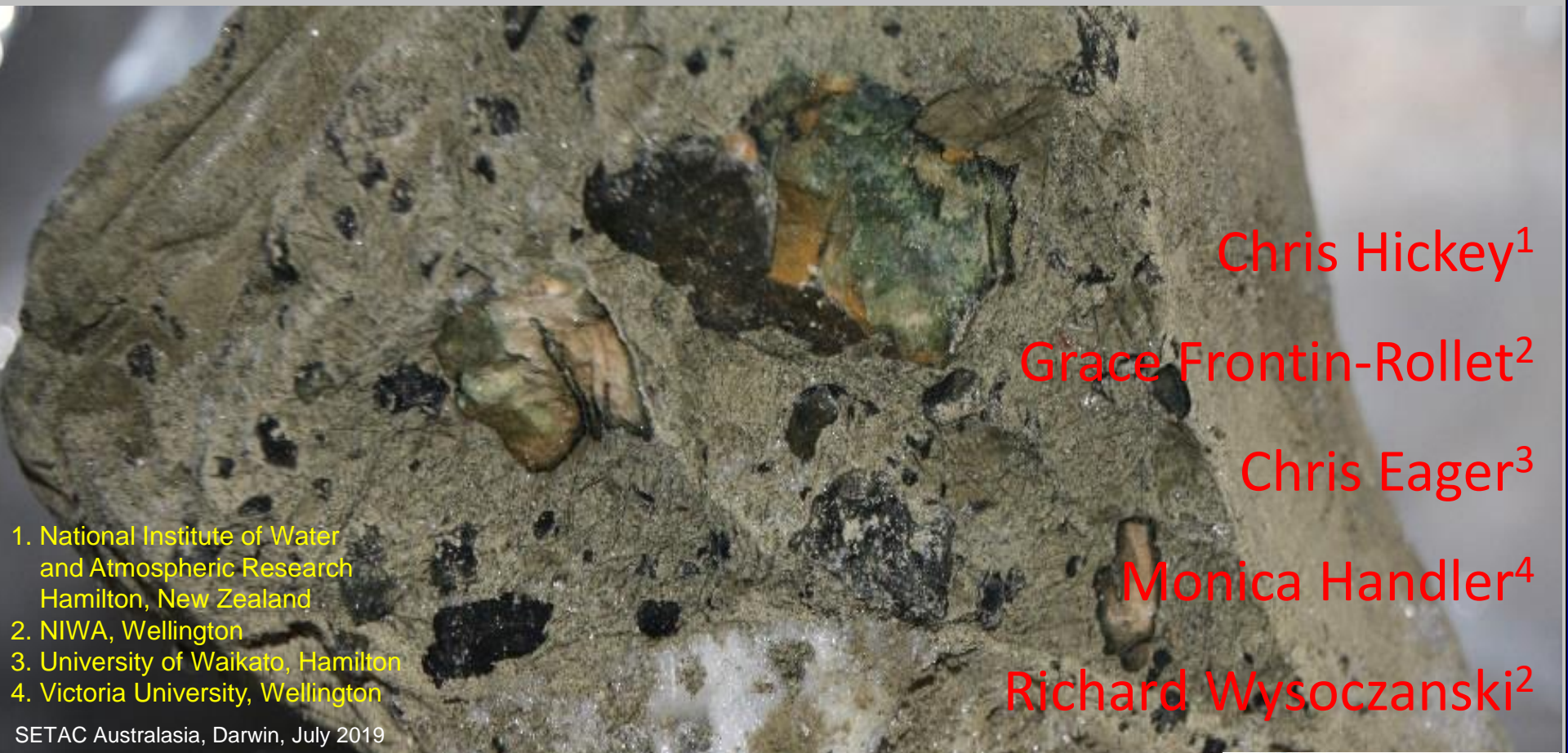


Ecotoxicity and Biogeochemical assessment of deep-sea mine sediments



Chris Hickey¹

Grace Frontin-Rollet²

Chris Eager³

Monica Handler⁴

Richard Wysoczanski²

- 1. National Institute of Water and Atmospheric Research
Hamilton, New Zealand
- 2. NIWA, Wellington
- 3. University of Waikato, Hamilton
- 4. Victoria University, Wellington

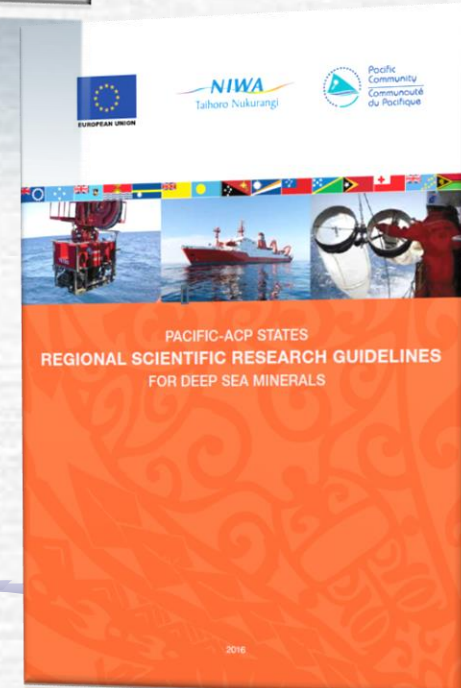
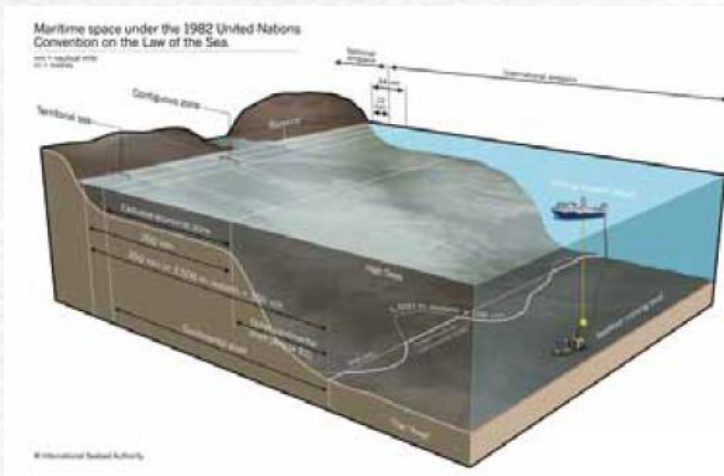
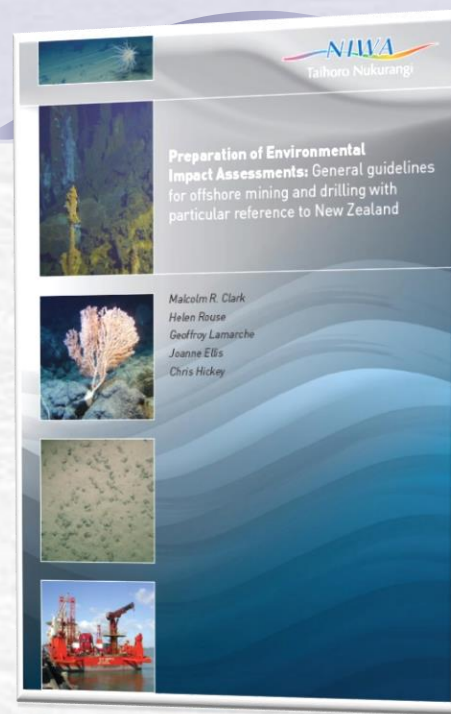
SETAC Australasia, Darwin, July 2019

Guidance documents

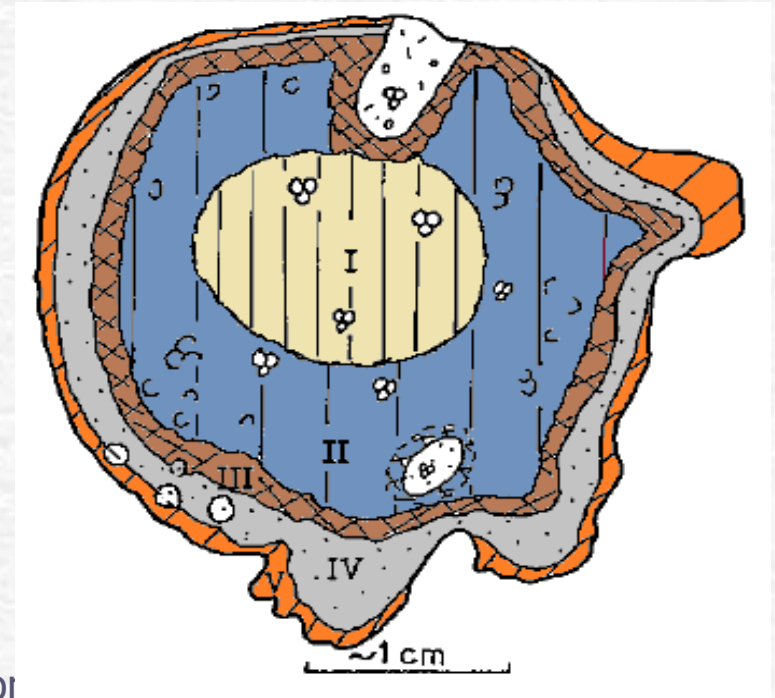
Toxicity and chemistry

- Standard elutriate procedures
- Laboratory based
- Initial screening assessments

Too simplistic...



Background: Phosphorites

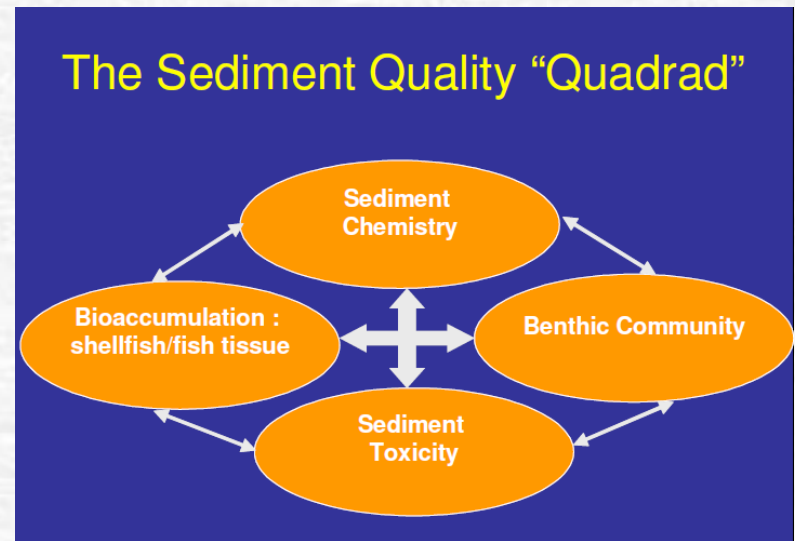


- ☞ An example of phosphorite nodule (adapted from
- ☞ I: Weakly phosphatised nanno chalk core;
- ☞ II: Outer phosphatised chalk zone;
- ☞ III: Goethite zone;,,
- ☞ IV: Collophane zone (amorphous phosphatic apatities);
- ☞ V: glauconite outer rim.

Chatham Rise phosphorites occur at about 500 m depth

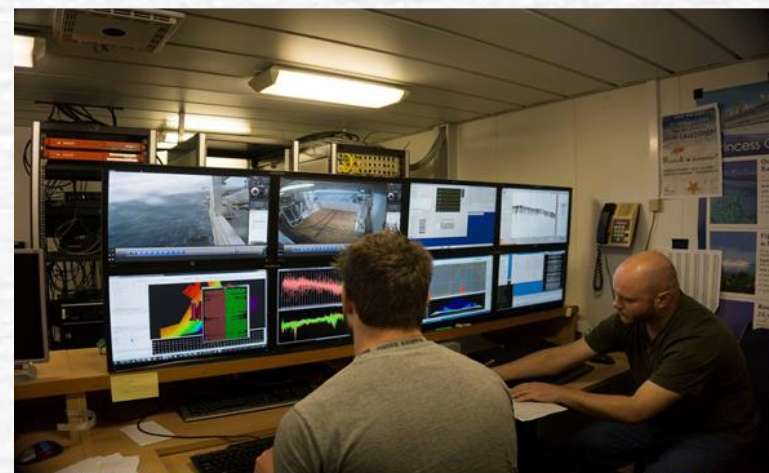
Conceptual

- Contaminants of concern
 - Trace metals (including rare earths) and other elements (???) – primarily dissolved fractions for toxicity and bioaccumulation
 - Sulphide, ammonia
 - pH
 - Modifiers (pH, dissolved organic carbon, iron/manganese, calcium, sediment)
- Dilution and dispersion (near-field, far-field)
- Elutriate and sediment toxicity
- Food-chain bioaccumulation
- Bioturbation/recovery processes
- Standard assessment methods
- Practical approaches

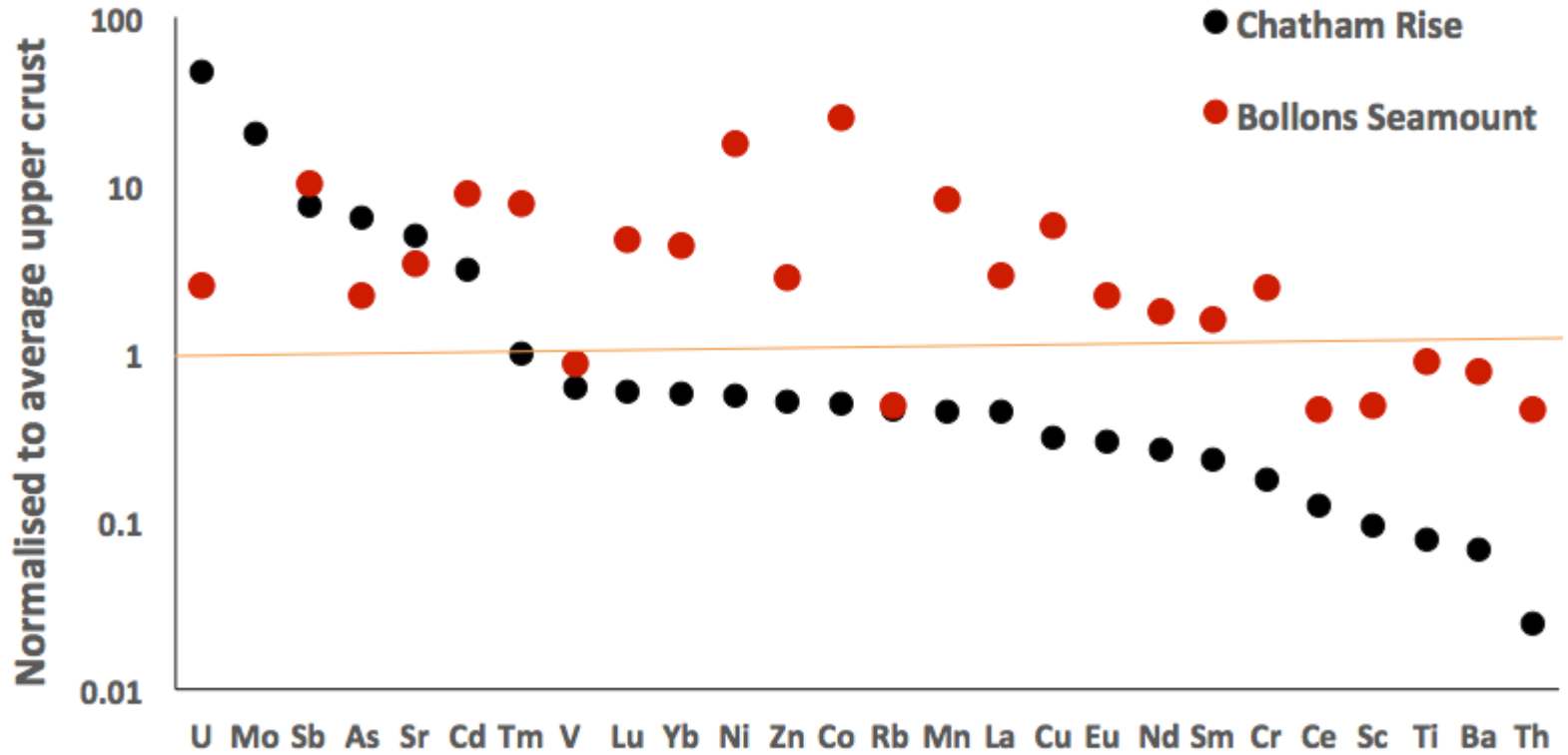


Objectives

1. To develop standardised approaches for chemical and ecotoxic characterisation of deep sea mining sediment
2. To field test assessment tools for potential deep sea mining activity
3. To establish critical effects thresholds for deep sea sponges and corals for suspended sediments (another project)
4. To provide updated guidelines for deep sea management



Background: Phosphorites

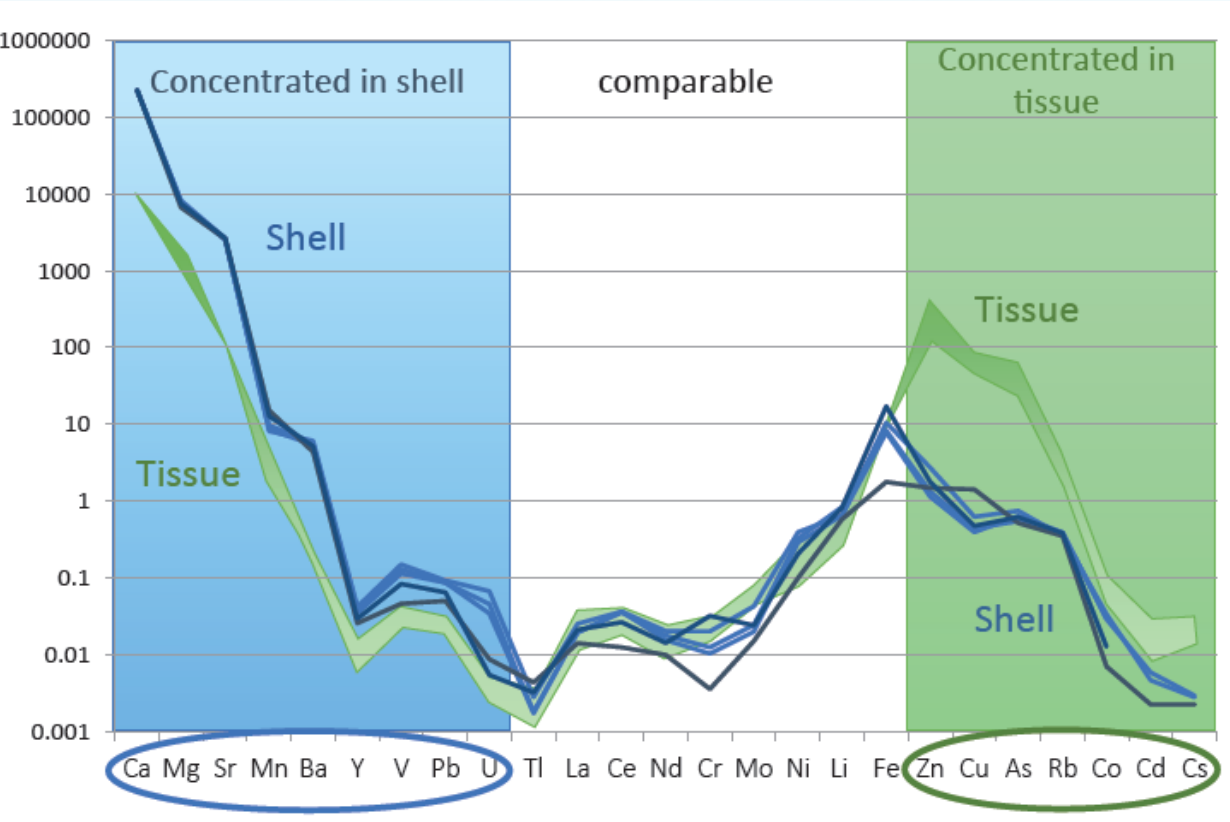
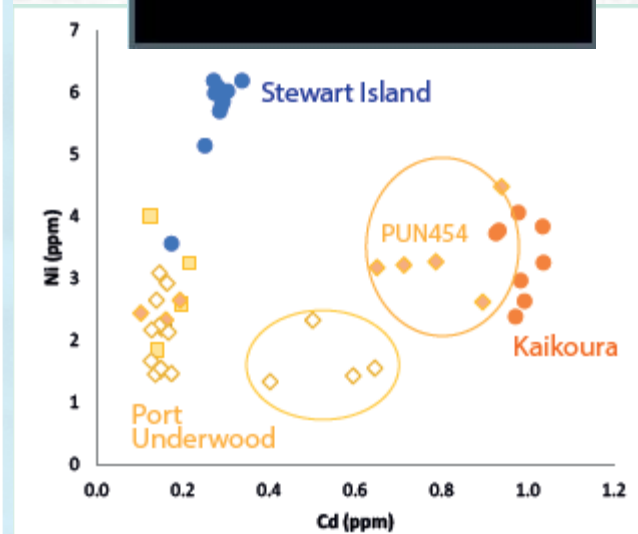


Biomonitoring: Crustacea

Decapods - *Munida gracilis*



Amphipod - *Ampelisca chiltoni*



Background: Sediments

Trace element abundances in sediments collected from the Chatham Rise (2012 survey).

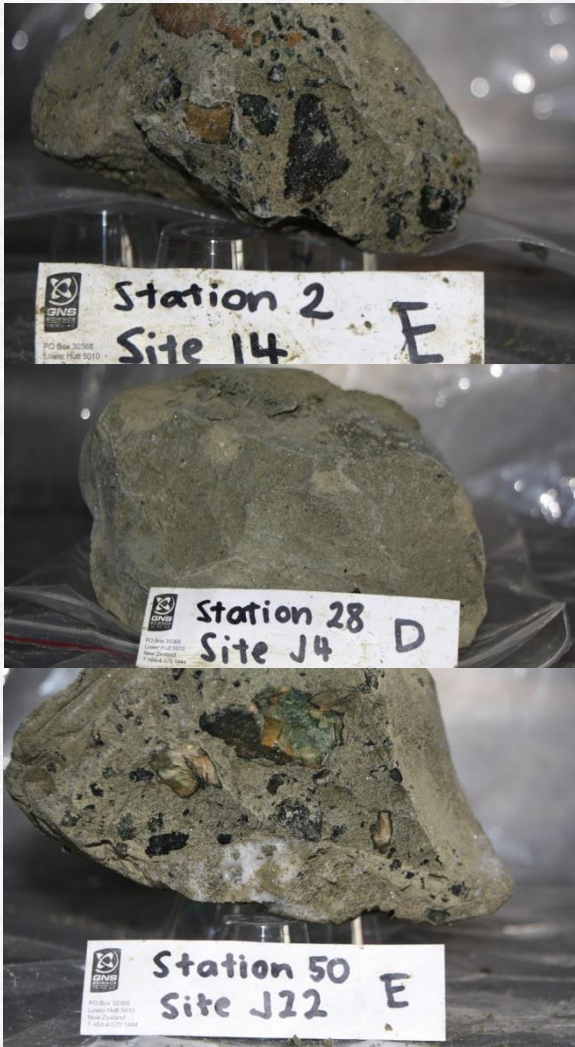
Notes: All units mg/kg dry wt.; <2 mm fraction. All results are mean values ± standard error. * n = 19. ** n = 12. *** n = 7. **** n = 5. # Kingett Mitchell (2005).

	Non-chalk			Chalk****	Phosphorite	Pegasus Bay Canterbury#
	All samples*	Surface**	Sub-surface***			
Arsenic	6.1 ± 0.6	5.9 ± 0.7	6.5 ± 1.1	<4	5-79	4.9 (3.7-6.6)
Cadmium	0.22 ± 0.02	0.18 ± 0.01	0.30 ± 0.03	0.29 ± 0.05	0.2	0.021 (0.02-0.04)
Chromium	39 ± 3	41 ± 3	36 ± 6	20 ± 4	0-30	11.7 (10.2-13.9)
Copper	6.2 ± 0.2	6.2 ± 0.2	6.2 ± 0.5	4.0 ± 0.8	5-85	4.2 (3.4-6.5)
Lead	3.4 ± 0.2	3.6 ± 0.2	3.2 ± 0.4	2.3 ± 0.4	5-24	9.0 (7.5-12.9)
Manganese	83 ± 2	82 ± 3	84 ± 4	81 ± 10	-	-
Molybdenum	0.46 ± 0.05	0.40 ± 0.05	0.57 ± 0.11	0.36 ± 0.07	3-17	-
Mercury	0.062 ± 0.004	0.066 ± 0.005	0.054 ± 0.005	0.038 ± 0.008		0.046 (0.04-0.07)
Nickel	20 ± 0.4	19 ± 0.5	21 ± 1	18 ± 1	6-59	9.0 (7.8-10.1)
Strontium	630 ± 40	570 ± 30	720 ± 80	1,100 ± 50	1,200-1,800	-
Uranium	8.6 ± 1.2	8.6 ± 1.5	8.6 ± 2.1	9.9 ± 1.8	20-480	-
Zinc	27 ± 0.8	27 ± 1	26 ± 2	17 ± 3	5-80	34.4 (28.2-39.1)

Laboratory: Elutriation and Toxicity

Elutriate testing:

- Standardised test (EPA, ASTM)
 - Developed to assess point of dredging/far-field/confined disposal scenarios
 - Defines key factors including sediment/water ratio, dark, temperature
-
- Sediment to water ratio of 1:4
 - Standard 30 minute agitation (tumbling)
 - Extended 24 hour agitation
 - Seawater (offshore)
 - No sieving (retaining phosphorite nodules)
 - Room temperature ($\sim 20^{\circ}\text{C}$)
 - Elutriates checked for pH, DO



Chatham Rise Elutriates



30 minute elutriate



24 hour elutriate

Chatham Rise Elutriate Results

- Results compared with ANZECC (2000) guidelines for **99% species protection** and the relative increase in background concentrations.
- The elutriate **exceeded guidelines** for dissolved **copper** and **total ammoniacal-N**. For the 30 min elutriate the maximum dilution to meet the copper guideline was 22x and ammoniacal-N 1.4x (vanadium maximally 64% of the guideline value).
- Parameters with concentrations **5x** over the offshore seawater were:
 - For 30 min elutriates - manganese (maximally 6.2x), ammoniacal-N (120x), vanadium (11x) and DOC (maximally 8.3x)
 - For 24 hour elutriates - uranium (maximally 8.2x), ammoniacal-N (68x), vanadium (15x) and DOC (maximally 7.6x).
- The relative elevations in concentration of uranium, molybdenum and fluoride were low (<4.3x, <1.4x and <1.5x respectively) in the 30 min elutriates.

Chatham Rise Toxicity tests

Organism	Test type	End-point
Marine amphipod <i>Chaetocorophium</i> c.f. <i>lucasi</i>	Acute	96 h morbidity and survival
Blue-mussel <i>Mytilus</i> <i>galloprovincialis</i>	Chronic	48 h embryo-larval development
Microtox™ bacterium <i>Vibrio fisheri</i>	Chronic	15 min bioluminescence reduction

Table 3-1: Toxicity results for 30 min elutriate procedure.

Sample code	Test Organism	EC ₅₀ ^a (95% CI) %	EC ₁₀ %	Chronic NOEC ^b %	Dilution for no toxicity ^d
PB1	Amphipod	>57.1%	57.1	5.7 ^c	17.5
	Blue Mussels	>100%	>100%	100	1
	Microtox™	>100%	c.90%	90	1.1
PB2	Amphipod	>57.1%	>57.1%	57.1%	<2
	Blue Mussels	>100%	>100%	100	1
	Microtox™	>100%	>100%	100	1
PB3	Amphipod	>57.1%	>57.1%	57.1%	<2
	Blue Mussels	>100%	>100%	100	1
	Microtox™	>100%	100%	100	1

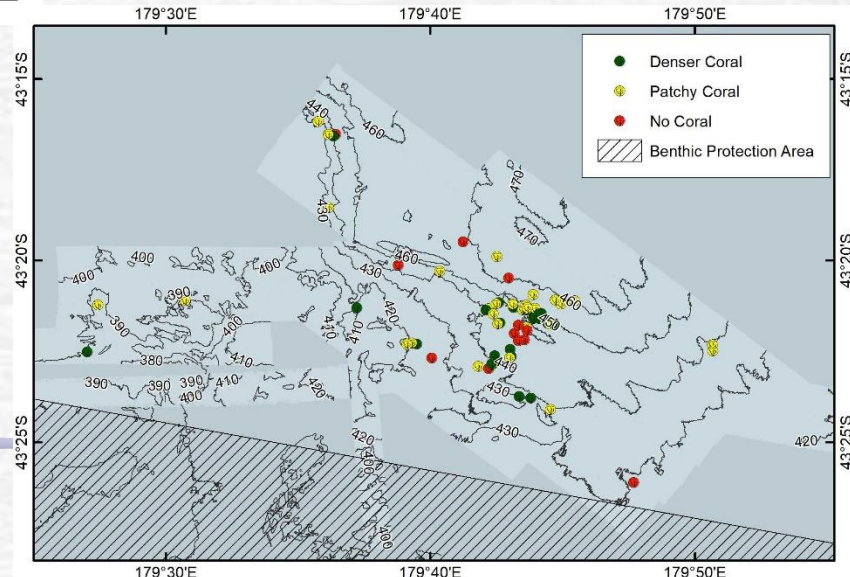
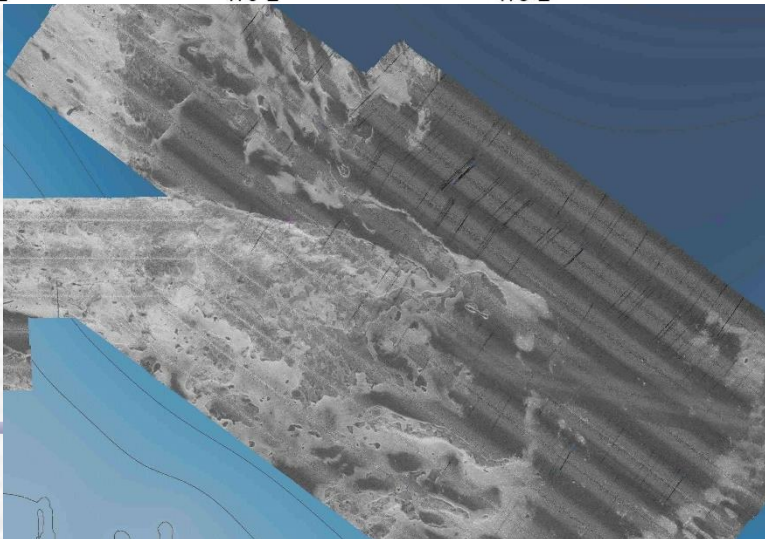
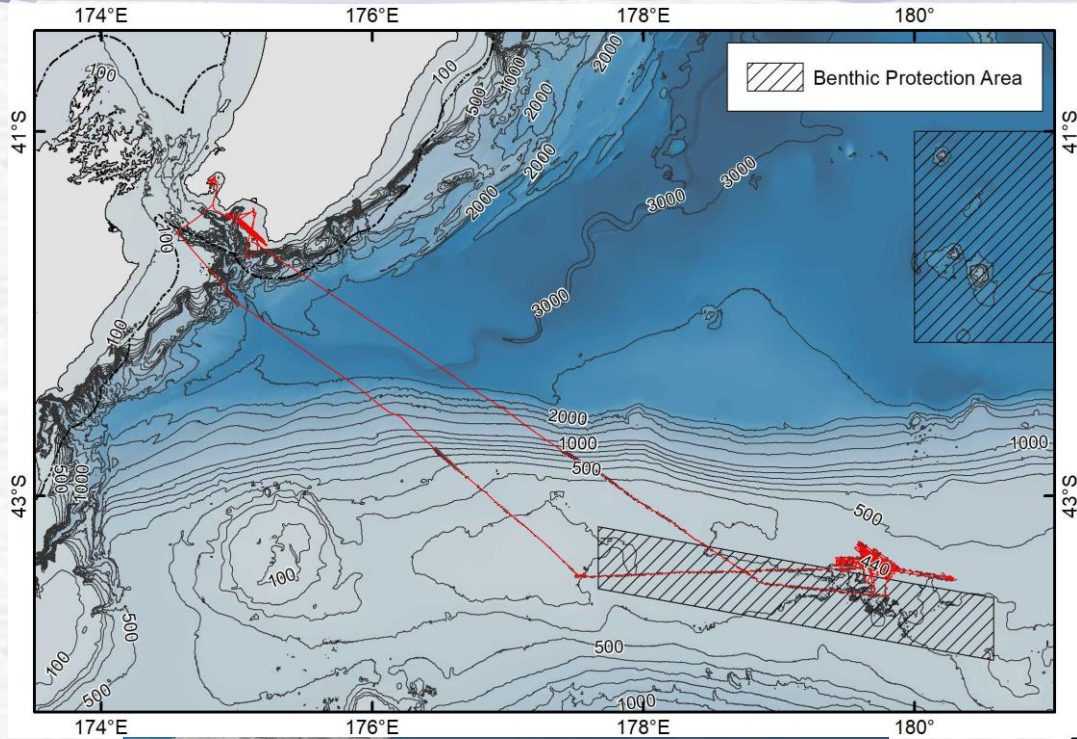
^a EC_N: The sample concentration causing an N% response relative to the control.

^b NOEC = No observed effect concentration; LOEC = Lowest observed effect concentration.

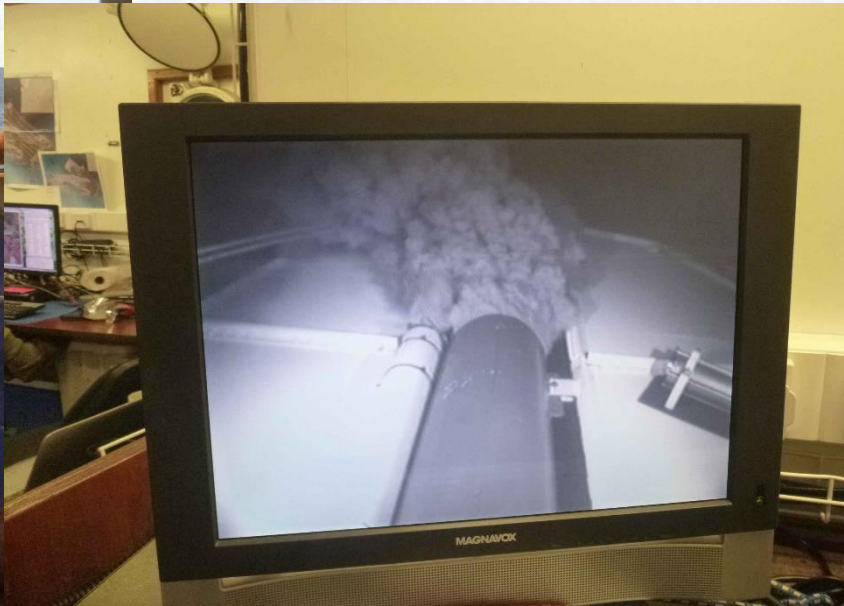
^c Estimated by acute LC₁₀/10 to allow for chronic effects.

^d No toxicity dilution = (1/Chronic NOEC)x100.

Field: Survey Region



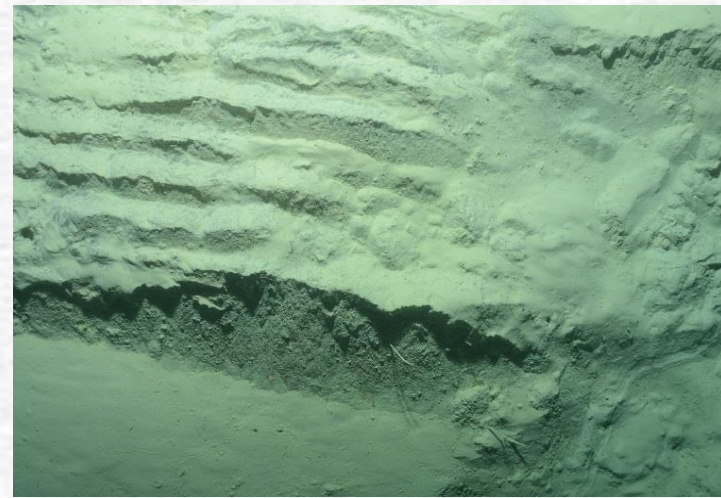
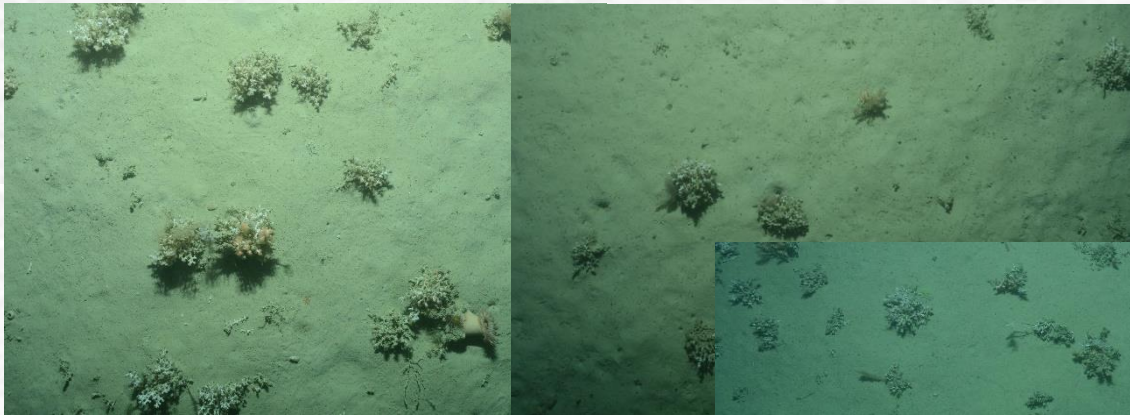
Field: The Benthic Disturber



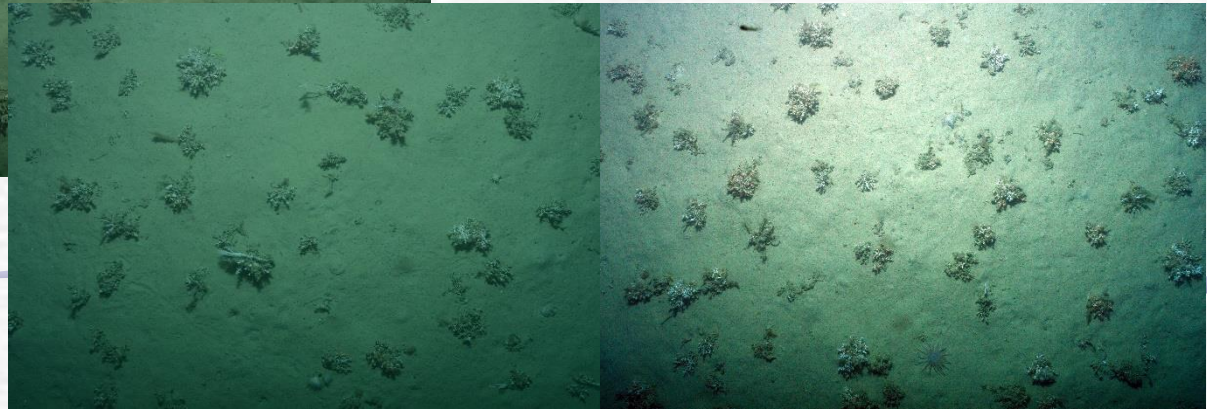
Extent of disturbance....

- Limited fluidisation of sediment (5 cm vs expected 15 cm-silty sediments under thin layer of muds)
- Sediment plume generated was less than expected
- Plus extensive benthic boundary layer height in water column (50-100 m above bottom)
- High levels of natural sedimentation

Before

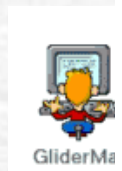
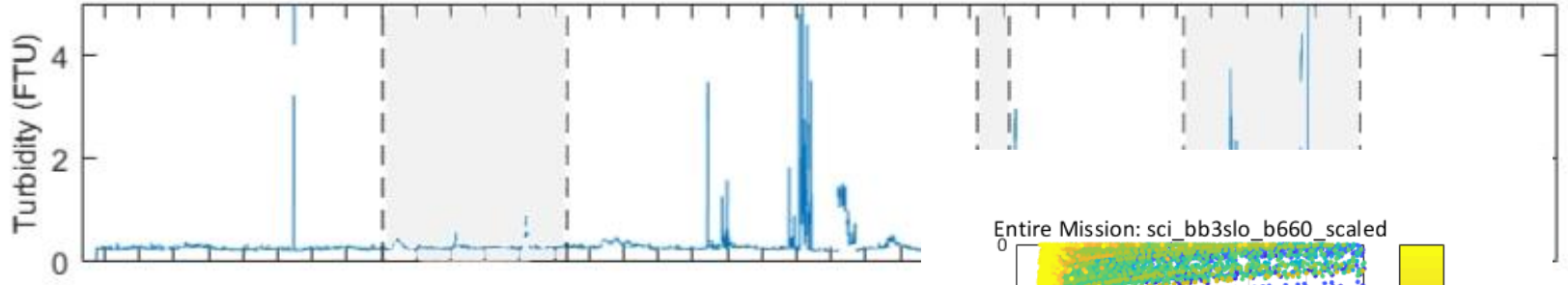


After



Field: Benthic landers and Glider "Betty"

Aqualogger Lander 1



Entire Mission: sci_bb3slo_b660_scaled

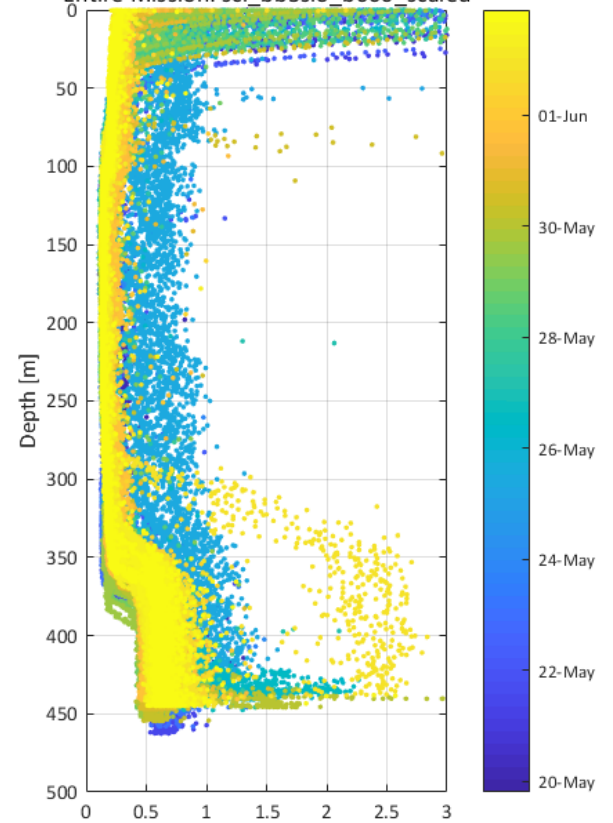


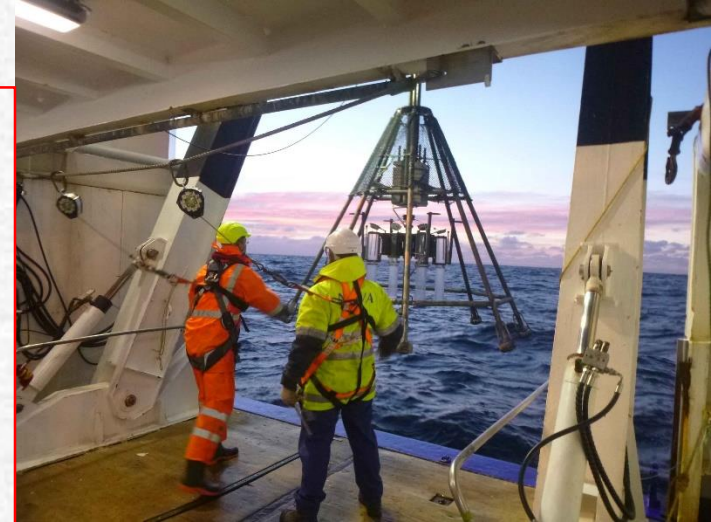
Figure created 04-Jun-2018 00:40:35Z



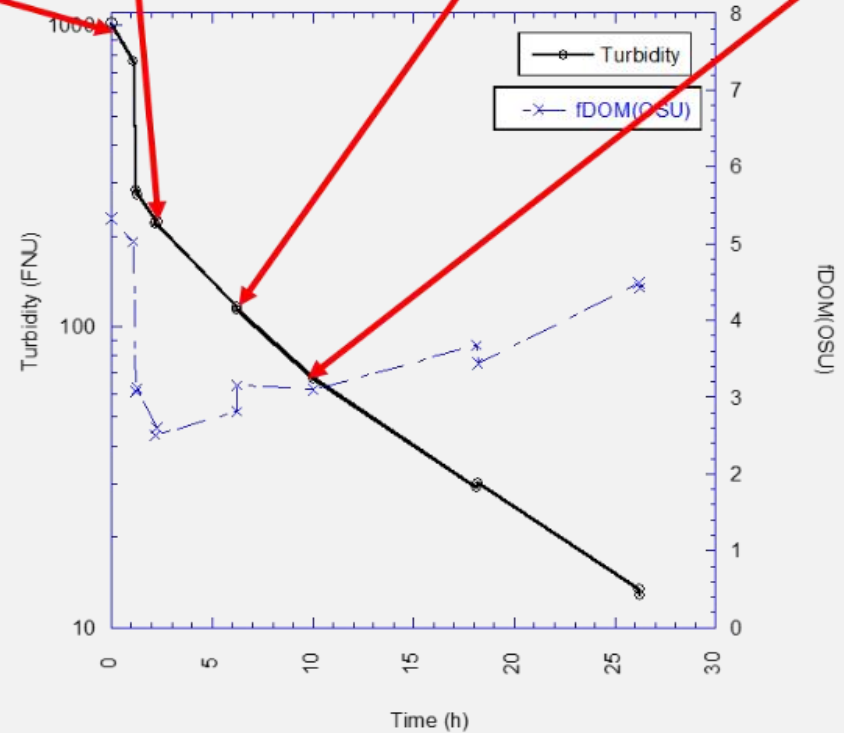
Field: Sediment coring

Ship-board lab work

- Elutriates (metals, nutrients, DOC, settling rates of fines)
- Biogeochemistry of sediments (DO, pH, redox profiles)
- Sediment capping by fine sediments-incubation
- Core fluxes-incubations (metals, nutrients, DOC)
- Sediment community oxygen consumption (SCOC)
- Sediment erosion measurement system (EROMES) - sediment transport parameters related to seabed shear stress

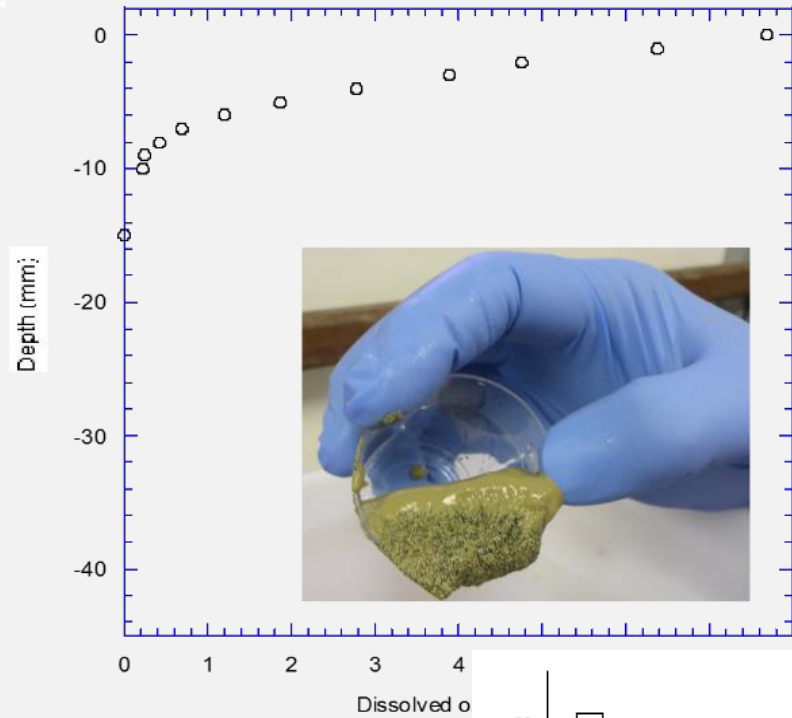
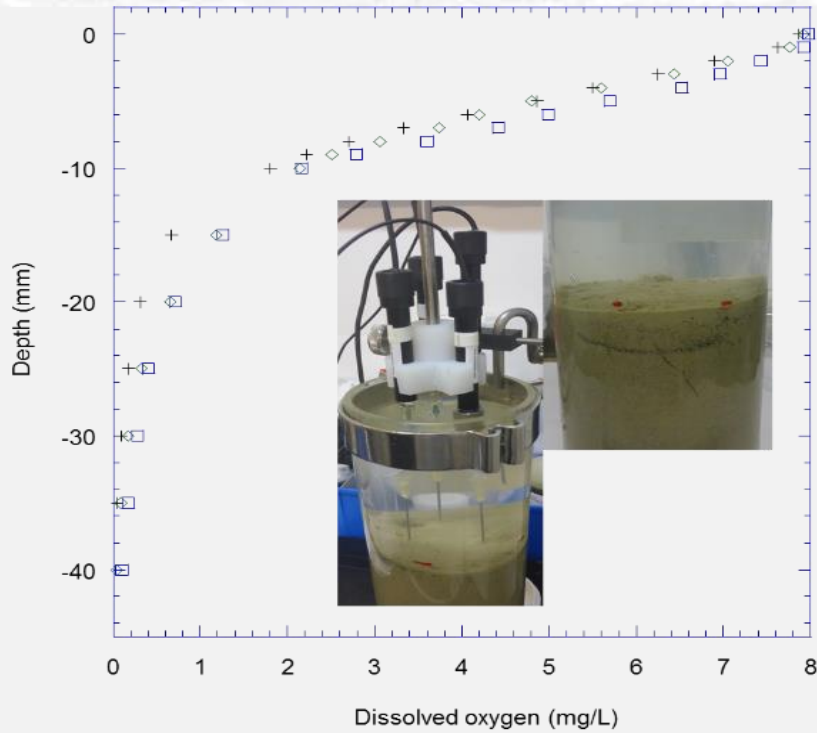


Elutriate trials

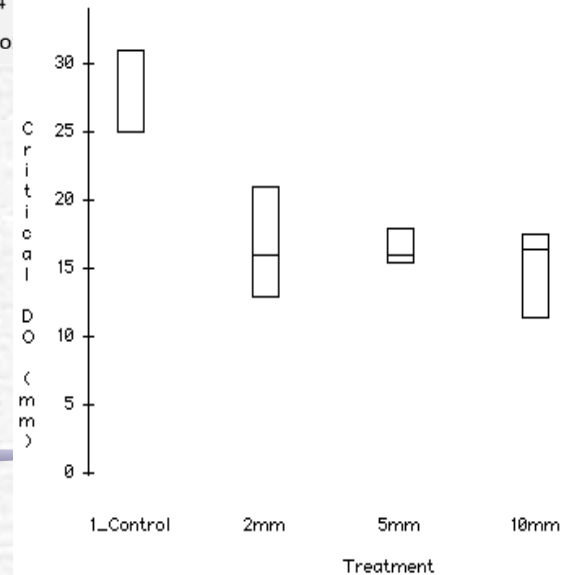


Elutriate test with natural reference sediment suspension (200x v/v dilution) and time series of measurements of turbidity and dissolved organic matter (fDOM).

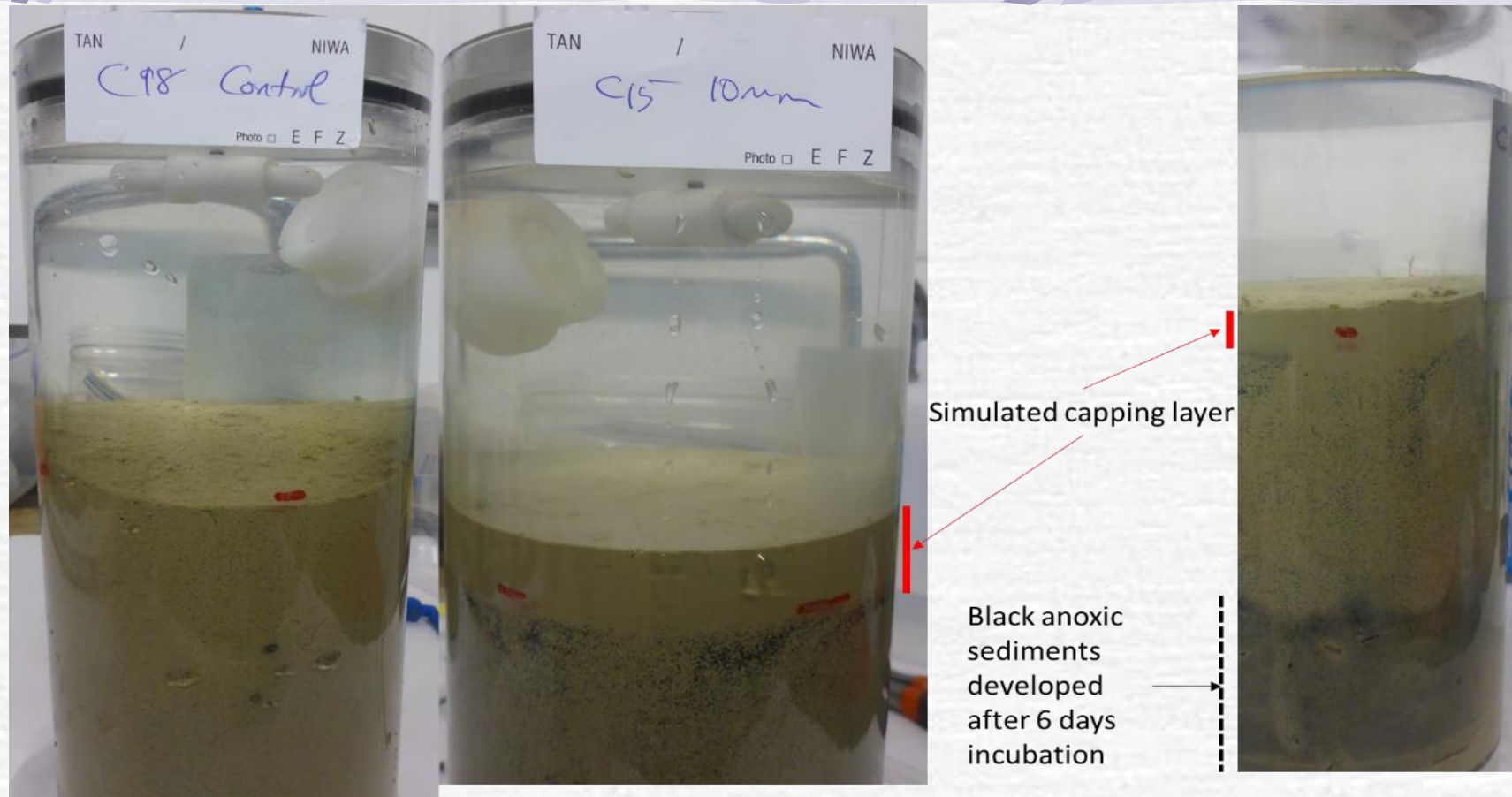
Field: Sediment capping illustration



Cores and apparatus for dissolved oxygen (DO) and pH micro-profiling with results for DO profiles for natural sediment (left) and sediment capped with fine material generated by the Benthic Disturber (right).



Sediment capping – long-term implications

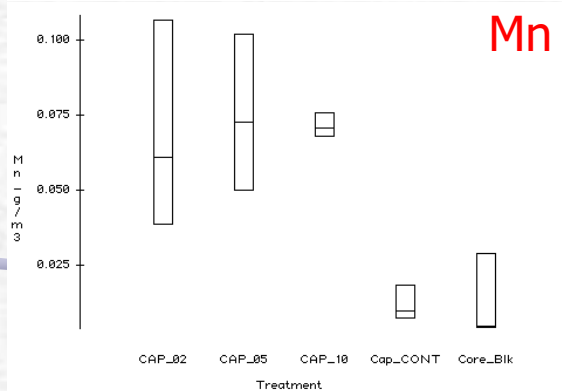
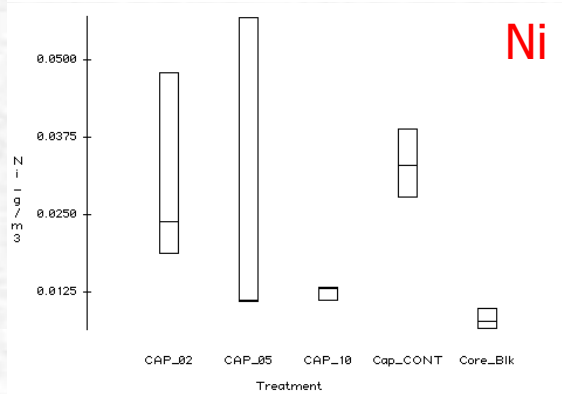
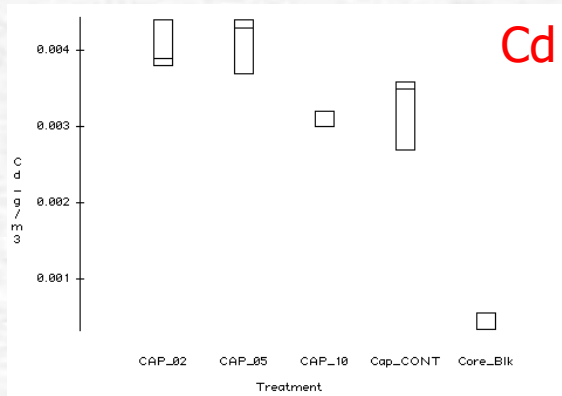


Cores showing addition of fine sediment capping layer and generation of black anoxic (smells sulphurous) sediments at about 10 cm sub-surface after 6 days incubation.

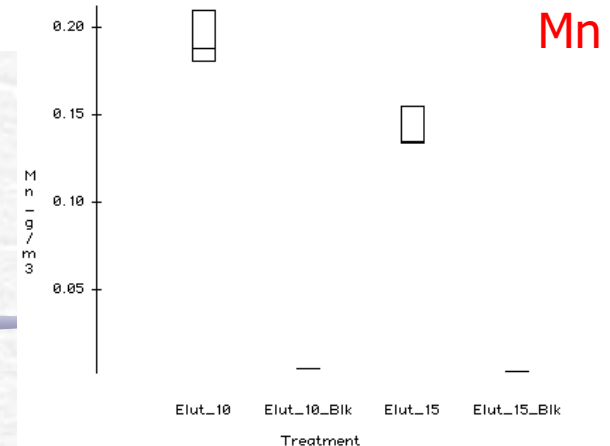
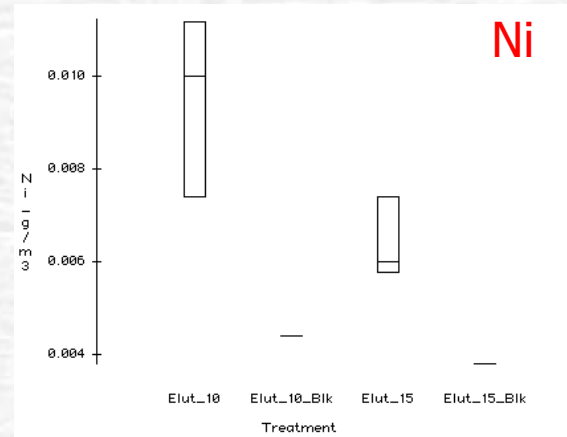
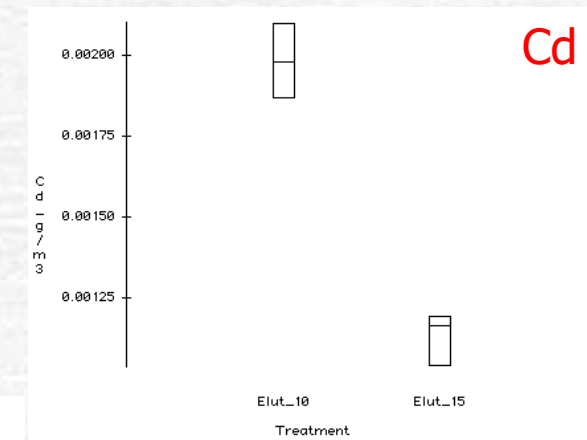


Sediment capping & elutriates – DGT metals

Cores (triplicate exposures)



Elutriates



Plus: marked DOC, nitrate and ammonia flux changes
→ key nitrogen cycle effects

Conclusions:

- Elutriate process need to be site-specific to best represent conditions/process (Issues: temperature, pH, time)
- Understand dredging/pumping/processing/dispersal/times involved (short but strong mechanical agitation)
- Spatial scale of physical changes (e.g., fine sediment deposition) are large
- Response times will be slow in the deep sea environment (potentially weeks to months) – new tools such as DGTs useful
- Field experimental work necessary to define biogeochemical process and effects (e.g., benthic nitrogen cycling – flux & eDNA techniques)
- Understand what can change geochemistry (especially if sediment/material being mined is sulfidic or organic – role of DOC)
- Interdisciplinary team and robust assessment tools needed for investigations

Questions?

References:

- Clark, M.R.; Rouse, H.L.; Lamarche, G.; Ellis, J.I.; Hickey, C.W. (2014). Impact Assessments: General guidelines for offshore mining and drilling with particular reference to New Zealand. No. 81. NIWA Science and Technology Series, Wellington, New Zealand. pp. 110.
- Hickey, C.W.; Albert, A.; Thompson, K.A.; Martin, M.L. (2014). Chatham Rise sediment elutriates: toxicity and chemistry. No. CRP12303; HAM2014-079. NIWA report for Golder Associates Ltd. pp. 72.
- Swaddling, A.; Clark, M.; Bourrel, M.; Lily, H.; Lamarche, G.; Hickey, C.; Rouse, H.; Nodder, S.; Rickard, G.; Sutton, P.; Wysoczanski, R. (2016). Pacific-ACP States Regional Scientific Research Guidelines for Deep Sea Minerals. Pacific Community (SPC) and the National Institute of Water and Atmospheric Research (NIWA) of New Zealand. Prepared under the SPC-EU EDF10 Deep Sea Mineral Project, Suva, Fiji.
- Wysoczanski, R.; Hickey, C.W. (2014). Uranium in marine sediments. No. MFE14303; WLG2014-18. NIWA report for the Ministry for the Environment, pp. 28.
- Chatham Rock Phosphate Ltd (2014). Review of Sediment Chemistry and Effects of Mining (Golder 2014a). Appendix 11. No. Chatham Rock Phosphate (CRP) Ltd, pp. 95.

Acknowledgements:

The crew of the Tangaroa; team at Chatham Rock Phosphate; Crew and Cruise Teams on Dorado Discovery (and other cruise vessels) for sampling; Tineke Stewart, GNS Science for providing the sediment samples; NIWA Hamilton Ecotox staff for testing; Graham Corban, Hill Laboratories, for collection of the offshore seawater from Alderman Islands.

Contact: chris.hickey@niwa.co.nz

Future:

- To further develop standardised approaches for chemical and ecotoxic characterisation of deep sea mining sediments
- Establish effects of ocean pH on chemical equilibria
- Conduct reference toxicant tests with major ecotoxic metals which are released during elutriation of deep sea sediments (e.g., vanadium, cobalt)
- Establish baseline metals levels and other physiological measures (e.g., lipids content, stable isotope composition) for selected species in deep sea mining areas
- Develop standard methods with representative deep sea species (e.g., corals, amphipods)
- Investigate and potentially develop standardised toxicity tests for whole sediment and sediment elutriates using selected infaunal species
- Conduct chemical and ecotoxic characterisation on additional marine mineral sediments (e.g., manganese nodules)
- Characterise bioturbation and sediment recovery process